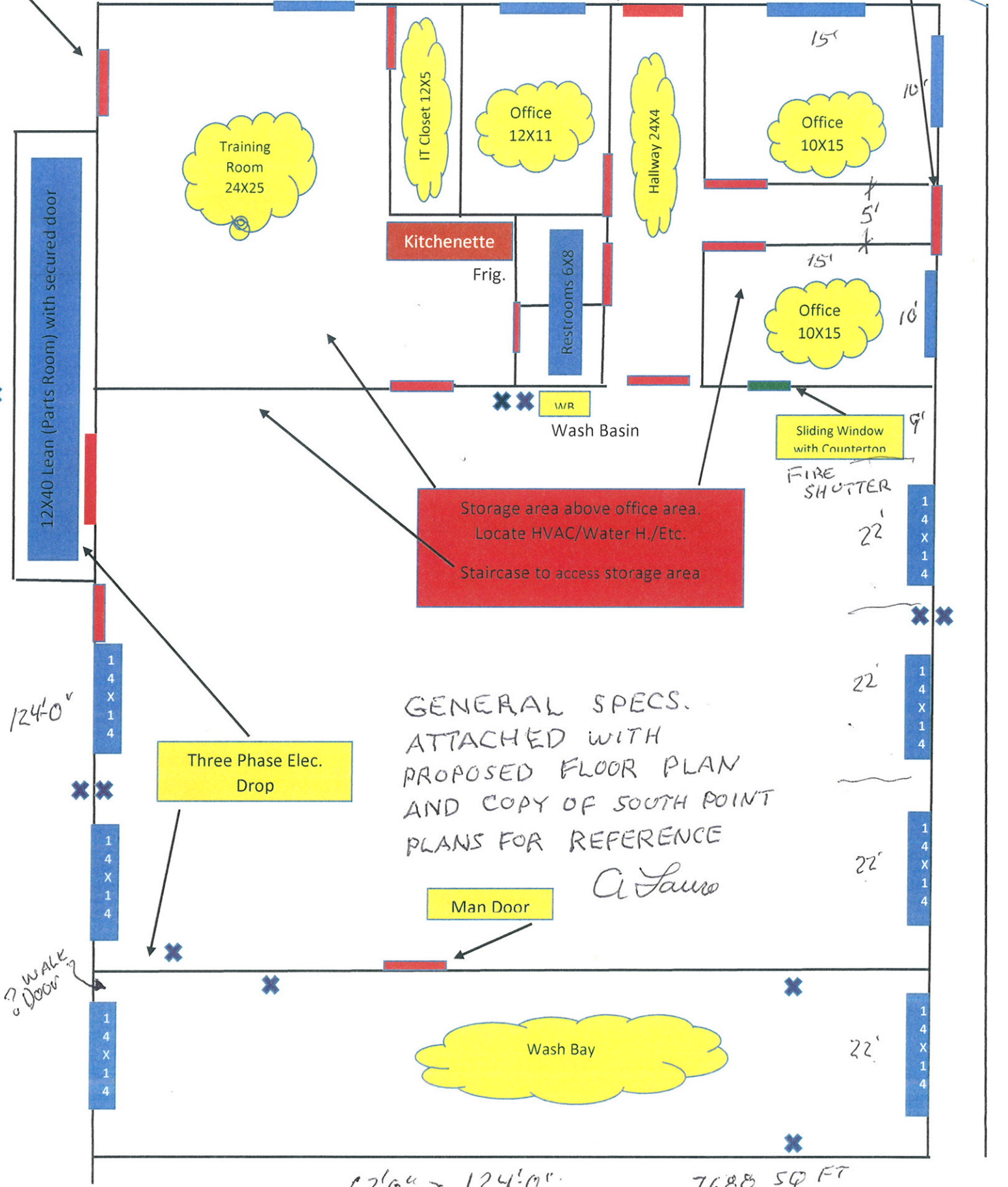


7-12-16
TONY LAURO, PE.
62'-0" Tony Lauro

124X62

Main Entrance

Exit Door



GENERAL SPECS.
ATTACHED WITH
PROPOSED FLOOR PLAN
AND COPY OF SOUTH POINT
PLANS FOR REFERENCE

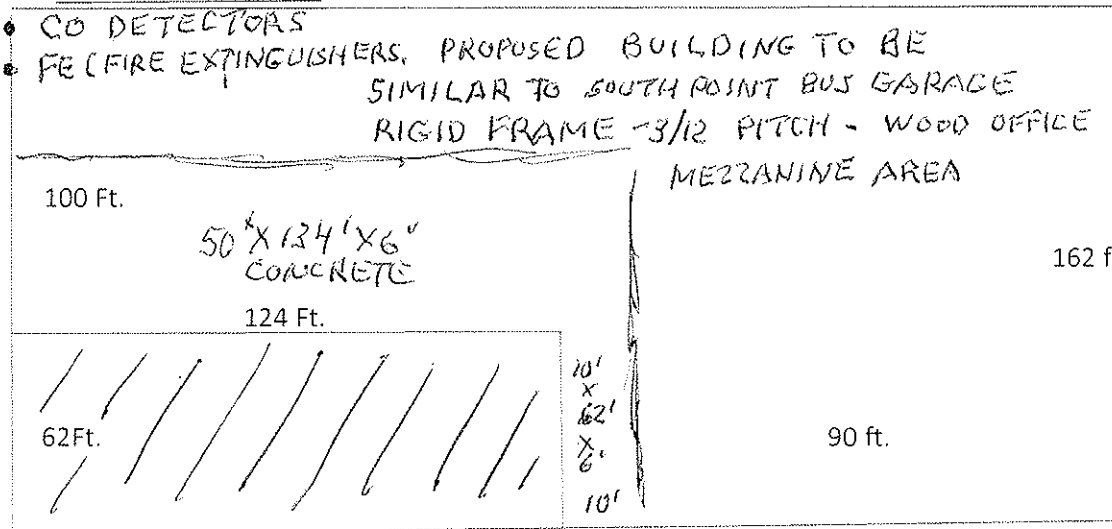
A Lauro

7-2-16

TONY LAURO P.E.

Tony Lauro P.E.

- 12X40 Parts room (lean)
- Approx 3X 24 foot overhang awning for main entrance
- Small awnings for other 3 exterior doors
- Full metal siding throughout (walls and ceiling) 28 GA, ROOF 26 GA STANDING SEAM SIDING 26 GA
- 16' ft eave ht - 22 ft. center (to match roof pitch)
- Gutters tied into drain tile
- Two-tone exterior metal siding
- Painting in office area
- Insulation throughout
- Parking lines ADA on concrete
- Bollards in front of garage bays
- 3 separate concrete pads exterior: 2 for gate sliders, 1 for gas pump
- 6 windows for office and conf room
- Drains in bays additional in wash bay with clean outs
- ¾ flooring above office/conf. room
- Staircase to area above office room
- Railing above office/conf room at edge to run the length
- VCT or concrete polish in office hallways/conf room and restrooms, carpet squares in offices
- Sliding glass window with 3 ft. countertop for office facing garage bay
- Kitchenette (with overhead cabinets with sink)
- Exterior box drains as needed front - Rear - by vacuum?
- Double steel doors leading to parts room
- (2) 50X134 concrete pads for front and rear of building
- 10X62 ft. concrete on south side of building (toward soccer field)
- Roof vent 14" with cap for future exhaust vent for steam washer
- Fencing around compound approximately 500 Ft. with two sliding gates with openers (4 remote per gate)
- Concrete floor in garage 6" PSI of _____
- Gravel parking lot inside of fencing approximately 36,000 sq.ft. with 8 inch base, sloping away from garage
- FUEL TANK - BY OWNER 214 Ft.



7-2-16
TONY LAURO P.E.
Tony Lauro P.E.

Plumbing:

- 1 ½ Feed dedicated to Wash Bay for Bus Wash System
- ¾ inch line drops in wash bay for hoses (X2)
- 1 inch water line drop for future steam washer in Bay 3
- Wash basin in garage (WB)
- Exterior water line drop (frost free) behind parts room

 COLD WATER LINE (3 Exterior Frost Free)

 HOT WATER LINE

Electrical

- 3-Phase Electric drop in two locations (plugs on both sides of walls so it can be used in four (4) locations)
- LED lighting throughout the building and exterior wall packs
- Ceiling fans (6) in garage bays 48'
- Elect. Drops Exterior (9) – 2 for gate sliders, 5 for bus plug in posts, 1 for gas pump, 1 for vacuum
- Multiple data, phone, cable drops in each office, conf. room, IT Room and at least one in garage
- Extra pipes ran to IT for future use
- CO2 Vents in garage
- Mast Pipe drop from utility pole (AEP) to set pole
- Exterior wiring receptacle for backup generator

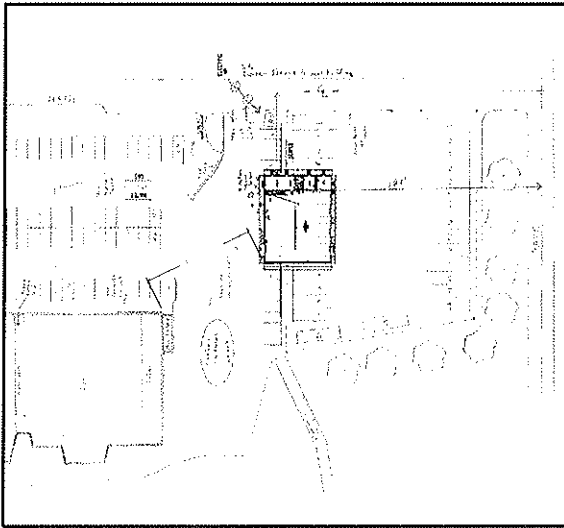
Heating and Cooling

- Gas tube heaters in garage area (3)?
- Gas furnace / AC Unit in office/conf area
- Gas heater in wash bay
- Gas drop ¾ in bay #3 for future steam washer

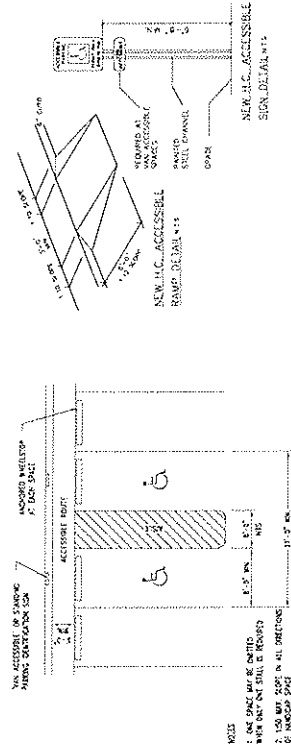
Construction

- 124X62 steel building with (7) 14X14 overhead garage doors, with openers, that follow roof line (2 remote openers for each and wall mounted switches) Garage doors to have two rows of windows

BUS GARAGE



SITE PLAN
SCALE: 1/8" = 1'-0"

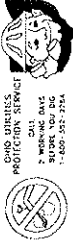


HANDICAP ACCESSIBLE PARKING SPACE DETAIL
(NYS)

- GENERAL NOTES:**
1. ALL WORK SHALL BE IN ACCORDANCE WITH THE LATEST EDITIONS OF THE INTERNATIONAL BUILDING CODE (IBC) AND THE INTERNATIONAL PLUMBING CODE (IPC).
 2. THE CONTRACTOR SHALL BE RESPONSIBLE FOR OBTAINING ALL NECESSARY PERMITS AND APPROVALS FROM THE LOCAL AUTHORITIES.
 3. ALL MATERIALS AND WORKMANSHIP SHALL BE SUBJECT TO INSPECTION AND APPROVAL BY THE LOCAL AUTHORITIES.
 4. THE CONTRACTOR SHALL MAINTAIN ACCESS TO ALL ADJACENT PROPERTIES AT ALL TIMES.
 5. ALL UTILITIES SHALL BE PROTECTED AND MARKED PRIOR TO ANY EXCAVATION WORK.
 6. THE CONTRACTOR SHALL MAINTAIN PROPER DRAINAGE AND EROSION CONTROL MEASURES THROUGHOUT THE PROJECT.
 7. ALL ELECTRICAL WORK SHALL BE PERFORMED IN ACCORDANCE WITH THE NATIONAL ELECTRICAL CODE (NEC).
 8. ALL MECHANICAL WORK SHALL BE PERFORMED IN ACCORDANCE WITH THE INTERNATIONAL MECHANICAL CODE (IMC).
 9. THE CONTRACTOR SHALL MAINTAIN PROPER RECORDS OF ALL WORK PERFORMED.
 10. ALL WORK SHALL BE COMPLETED WITHIN THE SPECIFIED TIME FRAME.

DRAWING SUMMARY

1. SITE PLAN, OBC TABLE, GENERAL NOTES, ADA
2. FLOOR PLAN
3. FOUNDATION PLAN, DETAILS & SAMPLE ELEVATIONS
4. MECHANICAL PLAN & DETAILS
5. PLUMBING & GAS SIZES & NOTES
6. ELECTRICAL POWER PLAN
7. ELECTRICAL LIGHTING PLAN
8. SCHEDULES



Anthony J. DeLuca, PE
ARCHITECTURAL
PROJECT NO. 2018-001
DATE: 03/20/2018

ONS DRENDS
PROTECTION SERVICE
ONE EAST
STATE ST. SUITE 100
COLUMBUS, OH 43215
614.462.1111

NO.	DESCRIPTION	DATE	BY	CHECKED BY
1	ISSUED FOR PERMIT	03/20/2018	TONY MAURO	TONY MAURO
2	ISSUED FOR CONSTRUCTION	03/20/2018	TONY MAURO	TONY MAURO
3	ISSUED FOR AS-BUILT	03/20/2018	TONY MAURO	TONY MAURO
4	ISSUED FOR FINAL	03/20/2018	TONY MAURO	TONY MAURO

BUS GARAGE
302 HIGH STREET, SOUTH POINT, OH 45680

SITE PLAN, OBC TABLE, GENERAL NOTES, ADA

SCALE: 1/8" = 1'-0"

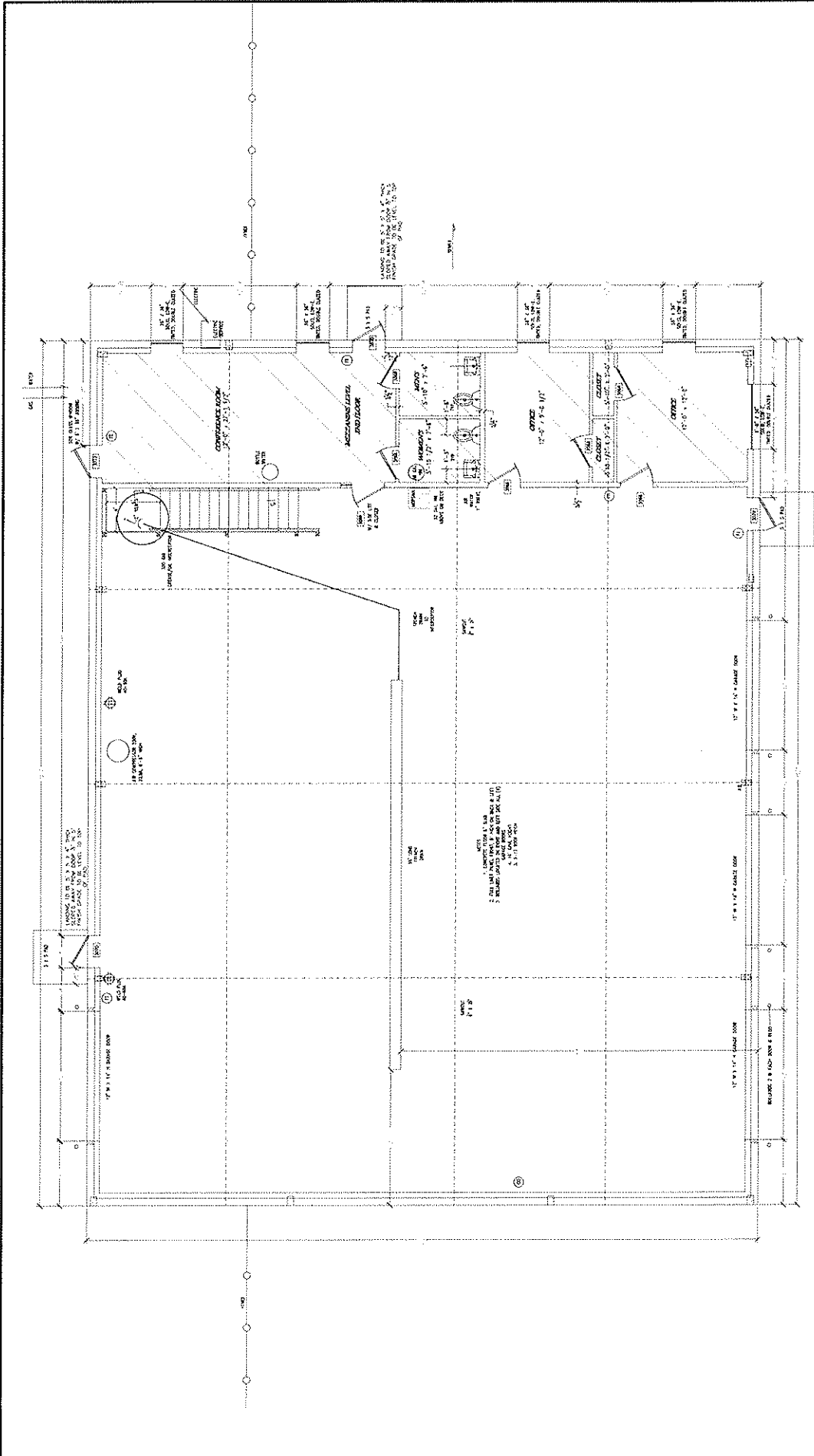
DATE OF DRAWING: 03/20/2018

DRAWN BY: R. MARCOM

CHECKED BY: TONY MAURO

DRAWING NO.: 10872

LOF: 8



FLOOR PLAN
SCALE: 1/4" = 1'-0"



OHIO UTILITIES
PROTECTION SERVICE
7 WORKING DAYS
SHORE TO SHORE
1-800-337-7141

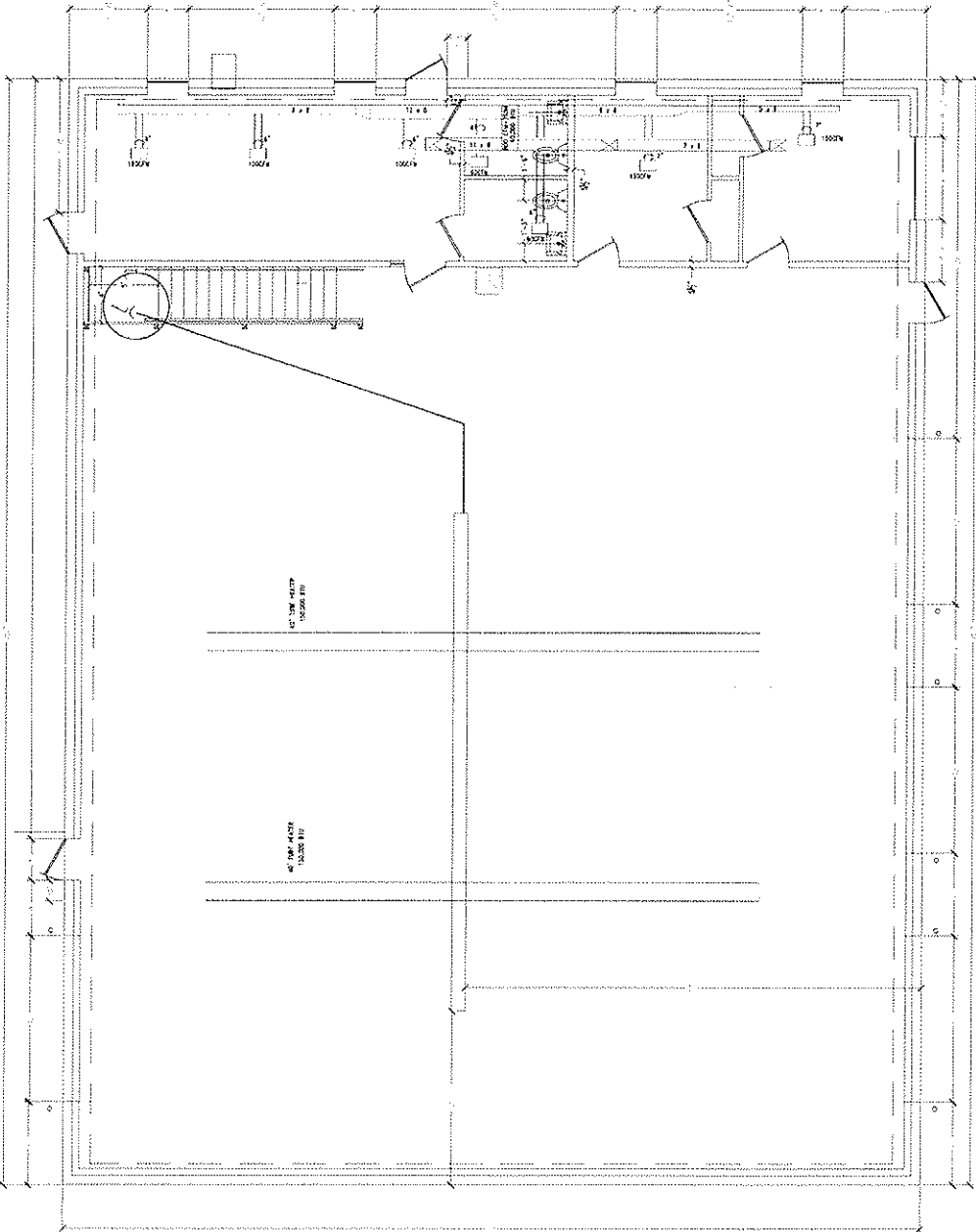


Anthony Stampf PE
ANTHONY J. STAMPF, PE
NO. 10510
STATE OF OHIO
DATE: 05/20/18

BUS GARAGE
302 HIGH STREET, SOUTH POINT, OH 45680

FLOOR PLAN

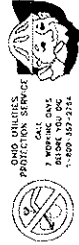
DATE OF DRAWING 05/20/18	SCALE 1/4" = 1'-0"	DRAWING NO. 10510	CHECKED BY TONY JARROLD	DRAWING NO. 2 OF 8
DATE OF DRAWING 05/20/18	SCALE 1/4" = 1'-0"	DRAWING NO. 10510	CHECKED BY TONY JARROLD	DRAWING NO. 2 OF 8
DATE OF DRAWING 05/20/18	SCALE 1/4" = 1'-0"	DRAWING NO. 10510	CHECKED BY TONY JARROLD	DRAWING NO. 2 OF 8



HVAC NOTES

1. UNIT PAD MUST BE ON CONCRETE. IF COMPASSING UNIT IS PLACED ON ROOF WITHIN 10' OF EDGE, PLEASE PROVIDE 4" HIGH MASONRY EXTENDING 3' BEYOND UNIT BOTH SIDES.
2. FLEX CONNECTOR LENGTHS ARE LIMITED TO 14'-0". (SEE 803.5.7.1)
3. FLEX BUCKS ARE UNLIMITED IN LENGTH.
4. ALL DUCTS TO BE INSULATED W/RS 1 1/2".
5. ALL SUPPLY HEAT DUCTS W/ACCESS, DAMPER FOR SERVICE, RECEIVER SHUT-DOWN ANY UNIT W/ 1/2" CLEARANCE TO WALLS AND CEILING.
6. PROVIDE 2-TON COOLING, 60,000 BTU PER HOUR, 130 WIRE-UP AIR COND. UNIT TO BE INSTALLED IN MECH. ROOM.
7. PROVIDE 2-TON COOLING, 60,000 BTU PER HOUR, 130 WIRE-UP AIR COND. UNIT TO BE INSTALLED IN MECH. ROOM.
8. PROVIDE 300,000 BTU HEATING, 1000 WATERS IN WAREHOUSE (E)-155200, 870 X 47' LONG.
9. PROVIDE 75 CFM DIRECT EXHAUST FAN VENTED TO OUTSIDE WITH WEIR, DUCT.
10. SEE IF SYSTEM HEAT AND AIR CONDENSING.

HVAC PLAN
SHEET 1/4 - 1-4



OHIO UTILITIES
PREDICTION SERVICE
7 WORKING DAYS
BEFORE YOU GO
1-800-397-3154



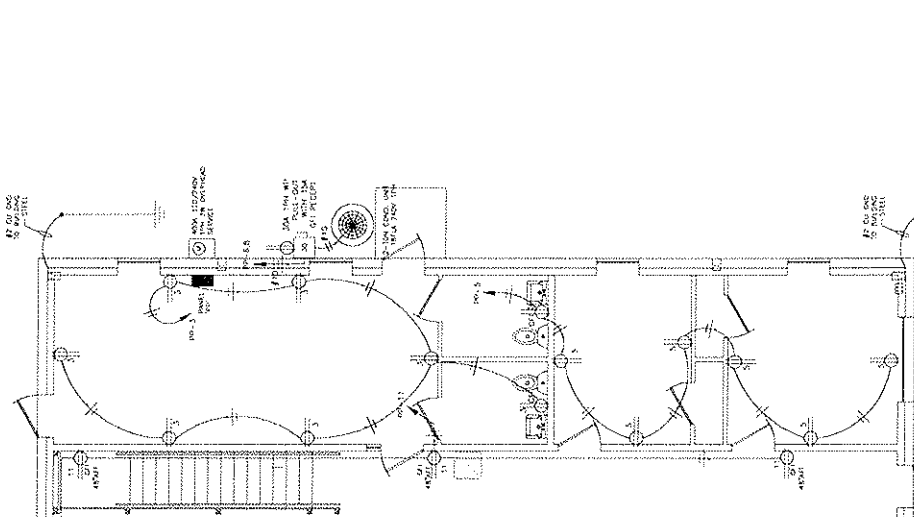
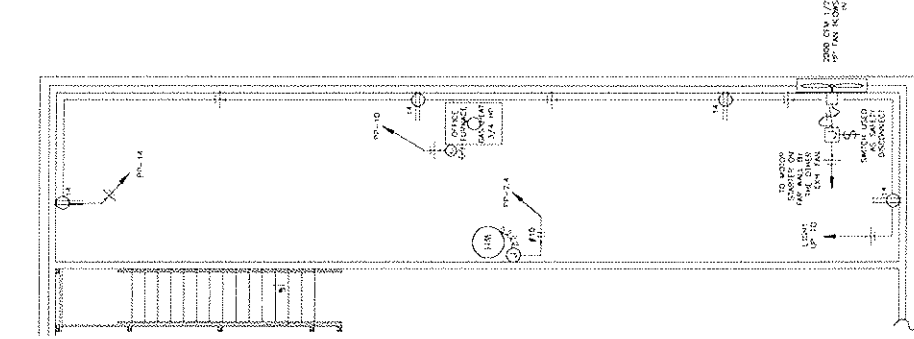
Anthony Lauro, P.E.
ANTHONY LAURO, P.E.
CHICPE, INC. 2025
DATE: 04/20/24

BUS GARAGE
302 HIGH STREET, SOUTH POINT, OH 45680

HVAC PLAN & NOTES

SCALE: NTS
DRAWN BY: C. MARCIA
CHECKED BY: TONY LAURO
DRAWING NO.: 7 OF 8

DATE OF DRAWING: 04/22/24
DISCUSSION: BUS GARAGE



MEZZANINE ELECTRICAL FLOOR PLAN
SCALE 1/4" = 1'-0"

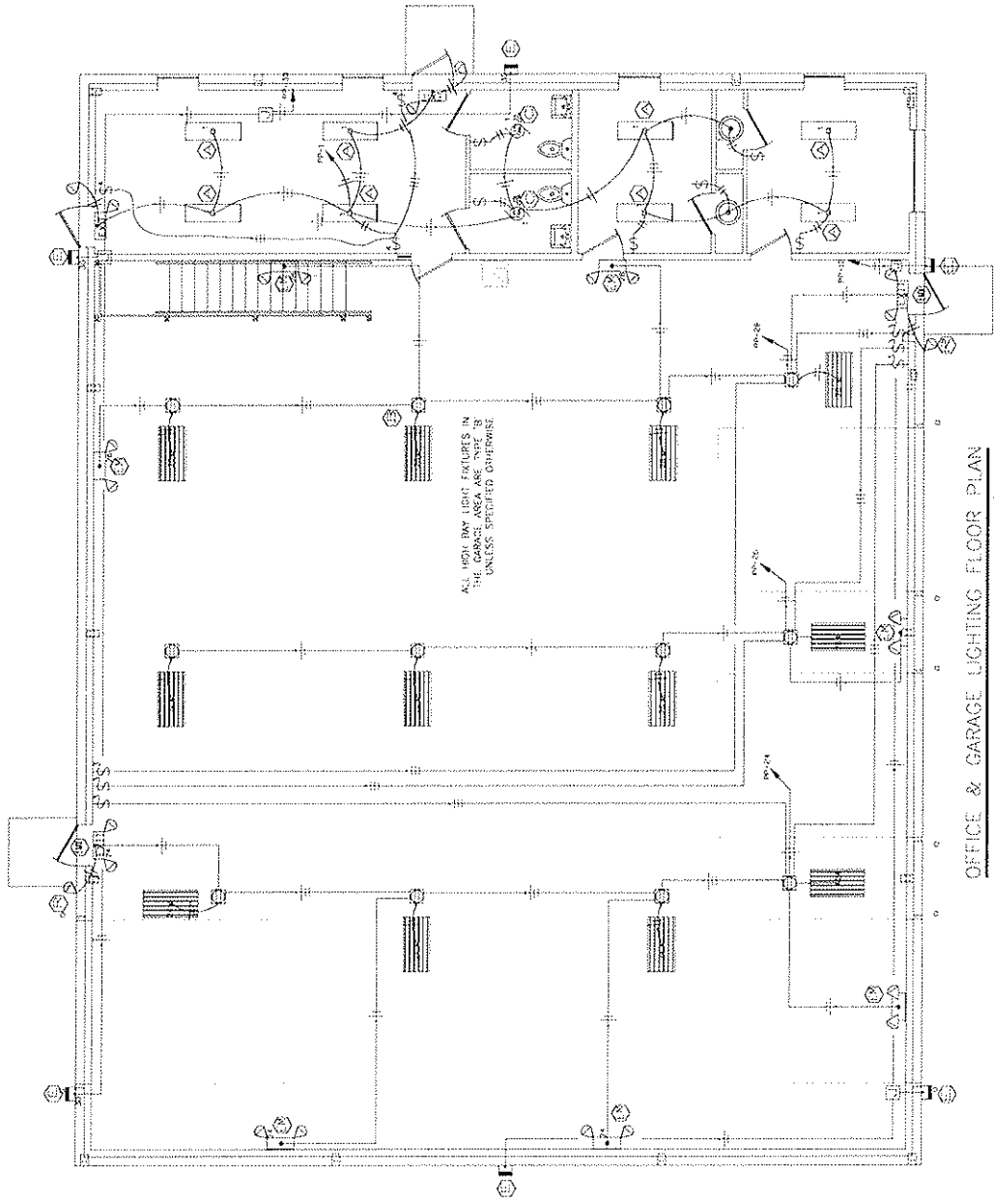
OFFICE & GARAGE ELECTRICAL FLOOR PLAN
SCALE 1/4" = 1'-0"

BUS GARAGE
SOUTH POINT, OHIO
ELECTRICAL FLOOR PLAN

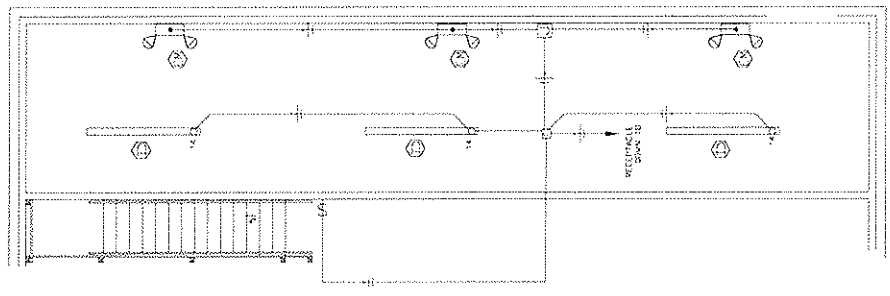
DATE OF DRAWING	4/28/14	SCALE	NTS	DRAWN BY	J. GALLAGHER	CHECKED BY	TONY LAURO	DRAWING NO.	E10E-3
BY	J. GALLAGHER								



Anthony Schmitt, P.E.
ANTHONY SCHMITT, P.E.
CHIO P.E. NO. 11525
DATE: 4/15/14



OFFICE & GARAGE LIGHTING FLOOR PLAN
SCALE: 3/4" = 1'-0"



MEZZANINE LIGHTING FLOOR PLAN
SCALE: 3/4" = 1'-0"

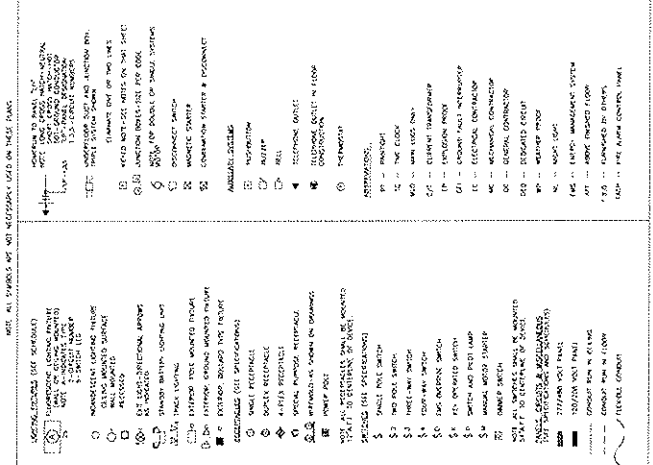
BUS GARAGE
SOUTH POINT, OHIO
LIGHTING FLOOR PLAN

SCALE	DATE OF DRAWING	DRAWN BY	CHECKED BY	DRAWING NO.
NTS	4/28/14	J. GALLAGHER	TONY LAURO	82015



Anthony Scamporrino, P.E.
ANTHONY SCAMPORRINO, P.E.
L-23878
STATE OF OHIO
DATE: 4/28/14

ELECTRICAL SYMBOLS



GENERAL ELECTRICAL NOTES

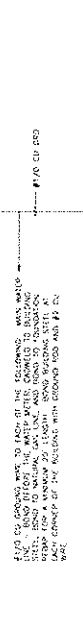
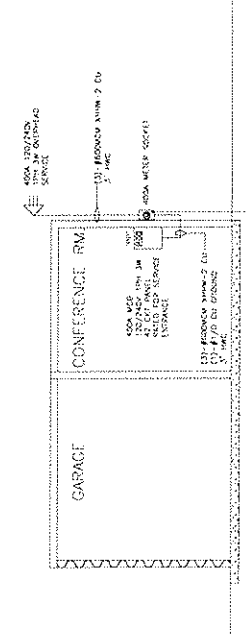
- NO WIRING SHALL BE MADE IN ANY PANELS, TRAYS, OR CONDUITS TO BE USED FOR THE INSTALLATION OF ELECTRICAL WORK.
- ALL WIRING SHALL BE IN ACCORDANCE WITH THE CODES AND THE MANUFACTURER'S INSTRUCTIONS.
- ALL WIRING SHALL BE IN ACCORDANCE WITH THE CODES AND THE MANUFACTURER'S INSTRUCTIONS.
- ALL WIRING SHALL BE IN ACCORDANCE WITH THE CODES AND THE MANUFACTURER'S INSTRUCTIONS.
- ALL WIRING SHALL BE IN ACCORDANCE WITH THE CODES AND THE MANUFACTURER'S INSTRUCTIONS.
- ALL WIRING SHALL BE IN ACCORDANCE WITH THE CODES AND THE MANUFACTURER'S INSTRUCTIONS.
- ALL WIRING SHALL BE IN ACCORDANCE WITH THE CODES AND THE MANUFACTURER'S INSTRUCTIONS.
- ALL WIRING SHALL BE IN ACCORDANCE WITH THE CODES AND THE MANUFACTURER'S INSTRUCTIONS.
- ALL WIRING SHALL BE IN ACCORDANCE WITH THE CODES AND THE MANUFACTURER'S INSTRUCTIONS.
- ALL WIRING SHALL BE IN ACCORDANCE WITH THE CODES AND THE MANUFACTURER'S INSTRUCTIONS.
- ALL WIRING SHALL BE IN ACCORDANCE WITH THE CODES AND THE MANUFACTURER'S INSTRUCTIONS.
- ALL WIRING SHALL BE IN ACCORDANCE WITH THE CODES AND THE MANUFACTURER'S INSTRUCTIONS.
- ALL WIRING SHALL BE IN ACCORDANCE WITH THE CODES AND THE MANUFACTURER'S INSTRUCTIONS.
- ALL WIRING SHALL BE IN ACCORDANCE WITH THE CODES AND THE MANUFACTURER'S INSTRUCTIONS.
- ALL WIRING SHALL BE IN ACCORDANCE WITH THE CODES AND THE MANUFACTURER'S INSTRUCTIONS.

GROUNDING AND BONDING

- THE ELECTRICAL SYSTEM SHALL BE IN ACCORDANCE WITH ARTICLE 250 OF THE NATIONAL ELECTRICAL CODE (NEC).
- THE ELECTRICAL SYSTEM SHALL BE IN ACCORDANCE WITH ARTICLE 250 OF THE NATIONAL ELECTRICAL CODE (NEC).
- THE ELECTRICAL SYSTEM SHALL BE IN ACCORDANCE WITH ARTICLE 250 OF THE NATIONAL ELECTRICAL CODE (NEC).
- THE ELECTRICAL SYSTEM SHALL BE IN ACCORDANCE WITH ARTICLE 250 OF THE NATIONAL ELECTRICAL CODE (NEC).
- THE ELECTRICAL SYSTEM SHALL BE IN ACCORDANCE WITH ARTICLE 250 OF THE NATIONAL ELECTRICAL CODE (NEC).
- THE ELECTRICAL SYSTEM SHALL BE IN ACCORDANCE WITH ARTICLE 250 OF THE NATIONAL ELECTRICAL CODE (NEC).
- THE ELECTRICAL SYSTEM SHALL BE IN ACCORDANCE WITH ARTICLE 250 OF THE NATIONAL ELECTRICAL CODE (NEC).
- THE ELECTRICAL SYSTEM SHALL BE IN ACCORDANCE WITH ARTICLE 250 OF THE NATIONAL ELECTRICAL CODE (NEC).
- THE ELECTRICAL SYSTEM SHALL BE IN ACCORDANCE WITH ARTICLE 250 OF THE NATIONAL ELECTRICAL CODE (NEC).
- THE ELECTRICAL SYSTEM SHALL BE IN ACCORDANCE WITH ARTICLE 250 OF THE NATIONAL ELECTRICAL CODE (NEC).
- THE ELECTRICAL SYSTEM SHALL BE IN ACCORDANCE WITH ARTICLE 250 OF THE NATIONAL ELECTRICAL CODE (NEC).
- THE ELECTRICAL SYSTEM SHALL BE IN ACCORDANCE WITH ARTICLE 250 OF THE NATIONAL ELECTRICAL CODE (NEC).
- THE ELECTRICAL SYSTEM SHALL BE IN ACCORDANCE WITH ARTICLE 250 OF THE NATIONAL ELECTRICAL CODE (NEC).
- THE ELECTRICAL SYSTEM SHALL BE IN ACCORDANCE WITH ARTICLE 250 OF THE NATIONAL ELECTRICAL CODE (NEC).
- THE ELECTRICAL SYSTEM SHALL BE IN ACCORDANCE WITH ARTICLE 250 OF THE NATIONAL ELECTRICAL CODE (NEC).

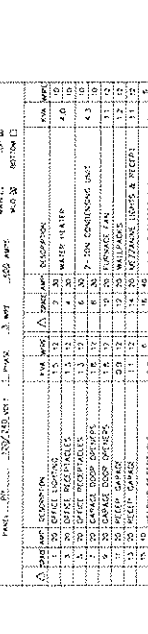
SEWER, INSTALLATION NOTES

- THE SEWER SHALL BE MADE IN ACCORDANCE WITH ARTICLE 300 OF THE NATIONAL ELECTRICAL CODE (NEC).
- THE SEWER SHALL BE MADE IN ACCORDANCE WITH ARTICLE 300 OF THE NATIONAL ELECTRICAL CODE (NEC).
- THE SEWER SHALL BE MADE IN ACCORDANCE WITH ARTICLE 300 OF THE NATIONAL ELECTRICAL CODE (NEC).
- THE SEWER SHALL BE MADE IN ACCORDANCE WITH ARTICLE 300 OF THE NATIONAL ELECTRICAL CODE (NEC).
- THE SEWER SHALL BE MADE IN ACCORDANCE WITH ARTICLE 300 OF THE NATIONAL ELECTRICAL CODE (NEC).
- THE SEWER SHALL BE MADE IN ACCORDANCE WITH ARTICLE 300 OF THE NATIONAL ELECTRICAL CODE (NEC).
- THE SEWER SHALL BE MADE IN ACCORDANCE WITH ARTICLE 300 OF THE NATIONAL ELECTRICAL CODE (NEC).
- THE SEWER SHALL BE MADE IN ACCORDANCE WITH ARTICLE 300 OF THE NATIONAL ELECTRICAL CODE (NEC).
- THE SEWER SHALL BE MADE IN ACCORDANCE WITH ARTICLE 300 OF THE NATIONAL ELECTRICAL CODE (NEC).
- THE SEWER SHALL BE MADE IN ACCORDANCE WITH ARTICLE 300 OF THE NATIONAL ELECTRICAL CODE (NEC).
- THE SEWER SHALL BE MADE IN ACCORDANCE WITH ARTICLE 300 OF THE NATIONAL ELECTRICAL CODE (NEC).
- THE SEWER SHALL BE MADE IN ACCORDANCE WITH ARTICLE 300 OF THE NATIONAL ELECTRICAL CODE (NEC).
- THE SEWER SHALL BE MADE IN ACCORDANCE WITH ARTICLE 300 OF THE NATIONAL ELECTRICAL CODE (NEC).
- THE SEWER SHALL BE MADE IN ACCORDANCE WITH ARTICLE 300 OF THE NATIONAL ELECTRICAL CODE (NEC).
- THE SEWER SHALL BE MADE IN ACCORDANCE WITH ARTICLE 300 OF THE NATIONAL ELECTRICAL CODE (NEC).



FIXTURE SCHEDULE

NO.	QUANTITY	MANUFACTURE	DESCRIPTION	NOTES
1	1	AMERICAN ELECTRIC	1/2" 20 x 20 x 10" GYPSUM BOARD	
2	1	AMERICAN ELECTRIC	1/2" 20 x 20 x 10" GYPSUM BOARD	
3	1	AMERICAN ELECTRIC	1/2" 20 x 20 x 10" GYPSUM BOARD	
4	1	AMERICAN ELECTRIC	1/2" 20 x 20 x 10" GYPSUM BOARD	
5	1	AMERICAN ELECTRIC	1/2" 20 x 20 x 10" GYPSUM BOARD	
6	1	AMERICAN ELECTRIC	1/2" 20 x 20 x 10" GYPSUM BOARD	
7	1	AMERICAN ELECTRIC	1/2" 20 x 20 x 10" GYPSUM BOARD	
8	1	AMERICAN ELECTRIC	1/2" 20 x 20 x 10" GYPSUM BOARD	
9	1	AMERICAN ELECTRIC	1/2" 20 x 20 x 10" GYPSUM BOARD	
10	1	AMERICAN ELECTRIC	1/2" 20 x 20 x 10" GYPSUM BOARD	
11	1	AMERICAN ELECTRIC	1/2" 20 x 20 x 10" GYPSUM BOARD	
12	1	AMERICAN ELECTRIC	1/2" 20 x 20 x 10" GYPSUM BOARD	
13	1	AMERICAN ELECTRIC	1/2" 20 x 20 x 10" GYPSUM BOARD	
14	1	AMERICAN ELECTRIC	1/2" 20 x 20 x 10" GYPSUM BOARD	
15	1	AMERICAN ELECTRIC	1/2" 20 x 20 x 10" GYPSUM BOARD	
16	1	AMERICAN ELECTRIC	1/2" 20 x 20 x 10" GYPSUM BOARD	
17	1	AMERICAN ELECTRIC	1/2" 20 x 20 x 10" GYPSUM BOARD	
18	1	AMERICAN ELECTRIC	1/2" 20 x 20 x 10" GYPSUM BOARD	
19	1	AMERICAN ELECTRIC	1/2" 20 x 20 x 10" GYPSUM BOARD	
20	1	AMERICAN ELECTRIC	1/2" 20 x 20 x 10" GYPSUM BOARD	
21	1	AMERICAN ELECTRIC	1/2" 20 x 20 x 10" GYPSUM BOARD	
22	1	AMERICAN ELECTRIC	1/2" 20 x 20 x 10" GYPSUM BOARD	
23	1	AMERICAN ELECTRIC	1/2" 20 x 20 x 10" GYPSUM BOARD	
24	1	AMERICAN ELECTRIC	1/2" 20 x 20 x 10" GYPSUM BOARD	
25	1	AMERICAN ELECTRIC	1/2" 20 x 20 x 10" GYPSUM BOARD	
26	1	AMERICAN ELECTRIC	1/2" 20 x 20 x 10" GYPSUM BOARD	
27	1	AMERICAN ELECTRIC	1/2" 20 x 20 x 10" GYPSUM BOARD	
28	1	AMERICAN ELECTRIC	1/2" 20 x 20 x 10" GYPSUM BOARD	
29	1	AMERICAN ELECTRIC	1/2" 20 x 20 x 10" GYPSUM BOARD	
30	1	AMERICAN ELECTRIC	1/2" 20 x 20 x 10" GYPSUM BOARD	
31	1	AMERICAN ELECTRIC	1/2" 20 x 20 x 10" GYPSUM BOARD	
32	1	AMERICAN ELECTRIC	1/2" 20 x 20 x 10" GYPSUM BOARD	
33	1	AMERICAN ELECTRIC	1/2" 20 x 20 x 10" GYPSUM BOARD	
34	1	AMERICAN ELECTRIC	1/2" 20 x 20 x 10" GYPSUM BOARD	
35	1	AMERICAN ELECTRIC	1/2" 20 x 20 x 10" GYPSUM BOARD	
36	1	AMERICAN ELECTRIC	1/2" 20 x 20 x 10" GYPSUM BOARD	
37	1	AMERICAN ELECTRIC	1/2" 20 x 20 x 10" GYPSUM BOARD	
38	1	AMERICAN ELECTRIC	1/2" 20 x 20 x 10" GYPSUM BOARD	
39	1	AMERICAN ELECTRIC	1/2" 20 x 20 x 10" GYPSUM BOARD	
40	1	AMERICAN ELECTRIC	1/2" 20 x 20 x 10" GYPSUM BOARD	
41	1	AMERICAN ELECTRIC	1/2" 20 x 20 x 10" GYPSUM BOARD	
42	1	AMERICAN ELECTRIC	1/2" 20 x 20 x 10" GYPSUM BOARD	
43	1	AMERICAN ELECTRIC	1/2" 20 x 20 x 10" GYPSUM BOARD	
44	1	AMERICAN ELECTRIC	1/2" 20 x 20 x 10" GYPSUM BOARD	
45	1	AMERICAN ELECTRIC	1/2" 20 x 20 x 10" GYPSUM BOARD	
46	1	AMERICAN ELECTRIC	1/2" 20 x 20 x 10" GYPSUM BOARD	
47	1	AMERICAN ELECTRIC	1/2" 20 x 20 x 10" GYPSUM BOARD	
48	1	AMERICAN ELECTRIC	1/2" 20 x 20 x 10" GYPSUM BOARD	
49	1	AMERICAN ELECTRIC	1/2" 20 x 20 x 10" GYPSUM BOARD	
50	1	AMERICAN ELECTRIC	1/2" 20 x 20 x 10" GYPSUM BOARD	
51	1	AMERICAN ELECTRIC	1/2" 20 x 20 x 10" GYPSUM BOARD	
52	1	AMERICAN ELECTRIC	1/2" 20 x 20 x 10" GYPSUM BOARD	
53	1	AMERICAN ELECTRIC	1/2" 20 x 20 x 10" GYPSUM BOARD	
54	1	AMERICAN ELECTRIC	1/2" 20 x 20 x 10" GYPSUM BOARD	
55	1	AMERICAN ELECTRIC	1/2" 20 x 20 x 10" GYPSUM BOARD	
56	1	AMERICAN ELECTRIC	1/2" 20 x 20 x 10" GYPSUM BOARD	
57	1	AMERICAN ELECTRIC	1/2" 20 x 20 x 10" GYPSUM BOARD	
58	1	AMERICAN ELECTRIC	1/2" 20 x 20 x 10" GYPSUM BOARD	
59	1	AMERICAN ELECTRIC	1/2" 20 x 20 x 10" GYPSUM BOARD	
60	1	AMERICAN ELECTRIC	1/2" 20 x 20 x 10" GYPSUM BOARD	



NOTES: SEE DRAWING FOR DIMENSIONS AND MATERIALS.
SEE DRAWING FOR DIMENSIONS AND MATERIALS.
SEE DRAWING FOR DIMENSIONS AND MATERIALS.

DATE: 4/8/4

SCALE: AS SHOWN

CHECKED BY: J. COLLIER

DRAWN BY: J. COLLIER

PROJECT NO: 1001-1000

DRAWING NO: E101-3

BUS GARAGE

SOUTH POINT, OHIO

ELECTRICAL RISER & SCHEDULES

APPROVED BY:

Anthony J. Collins
ANTHOLOGY, INC.
6300 PE RD 2025
CANTON, OH 44705